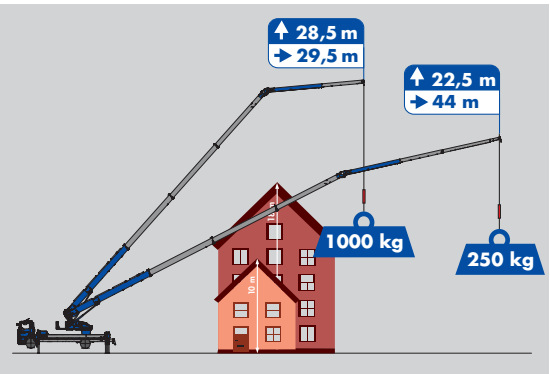


K1003 RSX



- Hook Height **52.25 m**/Boom length **54 m**
- Max. capacity **6,000 kg**
- 30 m** Working range with **1,000 kg**
- Hydraulic telescopic fly jib



K1003 RSX

Equipment

 TFR Boom system	 V-Outriggers	 Automatic levelling
 Hydraulic, telescopic fly jib	 Twin luffing cylinders	 Double derricking cylinders
 Telescopic winch	 360° continuous rotation	 Crane control system
 XL Radio remote control	 seperator Dieselmotor	 Extendable counterweight
 Full panelling	 FPM	 PTO
 Working platform (opt.)	 Accessory fix system (opt.)	 Mounting/glass hook (opt.)

Technical specifications

Hook load (stand./opt.)	3.0/6.0 t
Hook height	52.25 m
Boom Length	54.00 m
Outrigger width (min.)	2.94 m
Outrigger width (max.)	5.94 m
Winch Capacity	3,000 kg
Boom (3,000 kg - 1,000 kg)	6.61 - 15.45 m

Extension 3 (350 kg)	18.39 m
Truck* Total weight (min.)	≥ 22.00 t

*depending on truck type

Working range*

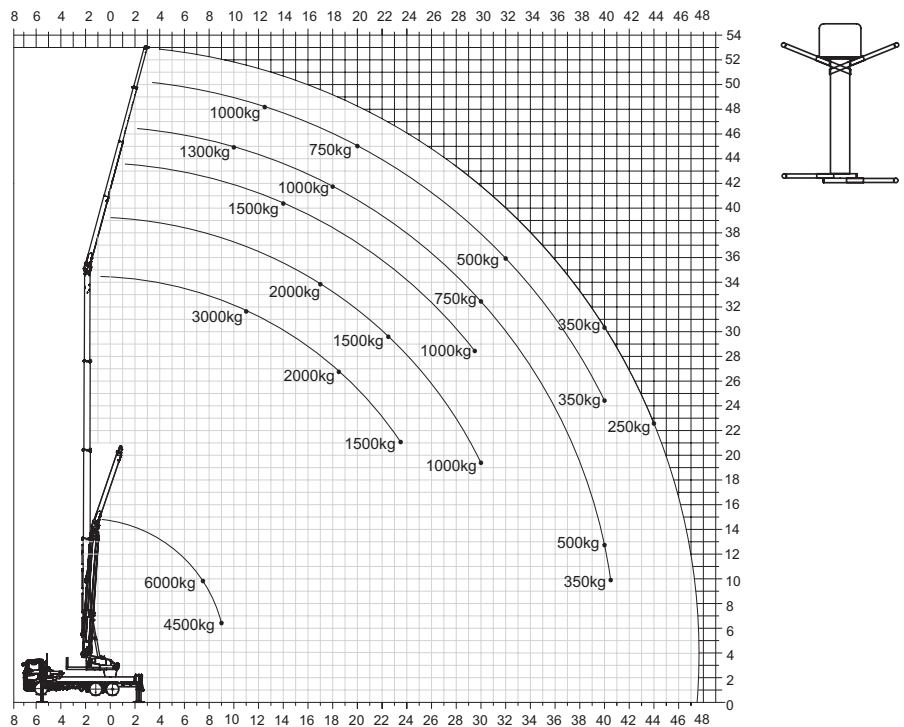
Load	Working range	Height
3,000 kg	11.00 m	31.50 m
2,000 kg	17.00 m	34.00 m
1,000 kg	29.50 m	28.50 m
250 kg	44.00 m	22.50 m

Working range 6t Capacity**

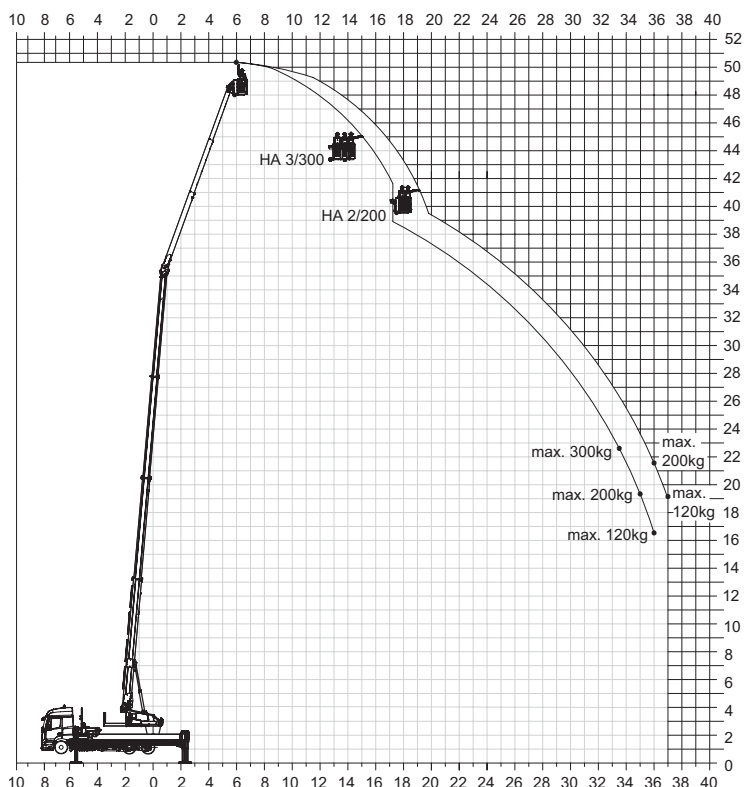
Load	Working range	Height
6,000 kg	7.50 m	10.00 m
4,500 kg	9.00 m	6.50 m

**with 2-fall instead

Working range diagram*



Platform operation*



*Working range vary, depending on truck type.

Subject to technical changes. All specifications are approximate and depending on truck type. Changes to the functions and services are reserved. The information reflects the device performance at the time of printing.